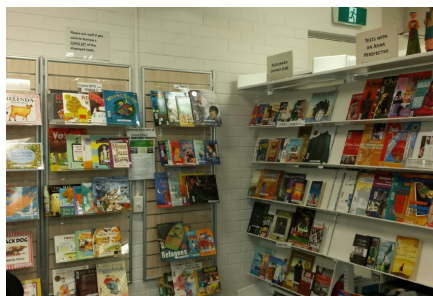


Information for borrowers

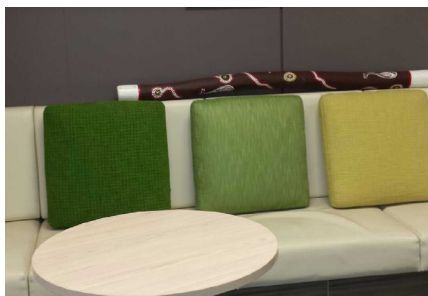
The Henry Parkes Equity Resource Centre supports the development and implementation of equity priorities in NSW government schools.



The Henry Parkes Equity Resource Centre supports state office, schools, teachers and their communities in implementing NSW Government equity priorities to achieve an informed and just society.

The Henry Parkes Equity Resource Centre's library provides a specialised, on-line lending collection and customised library services to teachers, classrooms, schools and educators throughout NSW to assist in reducing the achievement gap in educational outcomes for targeted equity groups.

The library collection includes an array of practical classroom and other professional resources in a range of media to support quality teaching and learning from preschool to Year 12. The areas of literacy and numeracy development are a key focus. Staff members of the Centre are able to support teachers and educators in the selection and use of resources.



The library can provide EAL/D New Arrival Program kits to schools with EAL/D New Arrivals Program allocations across the state. The library also has Cultural Artefacts kits, Reconciliation kits, class sets of literary texts and kits for pre-schools.

The library collection also includes professional readings and teaching materials related to:

- English as an additional language or dialect, multicultural and anti-racism education
- Languages other than English (LOTE) and bilingual education
- Community Languages Schools
- Aboriginal Education and Aboriginal languages
- the education of boys and girls
- values education
- student wellbeing, youth issues and drug education
- home, school and community partnerships, community capacity building and interagency collaboration
- school leadership, development and reform.

Henry Parkes Equity Resource Centre

Mimika Avenue Whalan NSW 2770

Centre hours

8:00 am to 5:00 pm M - W

9:00 am to 3:00 pm T - F

NOTE: The Centre is closed during the first week of the NSW public school holidays in Terms 1-3. Please see the library catalogue home page for December and January opening hours.

Enquiries and conference room bookings

Centre phone: 02 8808 1177

Centre fax: 02 8808 1171

Centre email:

equity.sydney@det.nsw.edu.au

Library membership, borrowing and enquiries

Library phone: 02 8808 1177

Library email:

EquityResourceLibrary@det.nsw.edu.au

Library website:

henryparkes.softlinkhosting.com.au

Return resources by mail to:

Henry Parkes Equity Resource Centre
Reply Paid 85615
Mimika Ave
Whalan NSW 2770

Membership

Membership is open to:

- all Department of Education employees
- university students enrolled in teacher education courses
- teacher education academic staff in universities
- teachers at Community Languages schools

Application Procedures

Intending members complete an [Equity Resource Library membership application form](#) and return it to the Equity Resource Library.

Membership Fees

Membership is free to all Department of Education employees, Community Languages teachers, university students enrolled in teacher education courses and teacher education academics in universities.

Borrowing Conditions

Library materials (except New Arrival Program (NAP) Kits and class sets of literary texts) may be borrowed for a maximum period of five (5) weeks.

NAP kits can be borrowed for three terms or the duration of the New Arrival Program funding.

Class sets of literary texts may be borrowed for nine weeks.

The borrower is responsible for items borrowed under her/his name.

A loan may be extended if there are no reservations on the resources.

Resources are sent to borrowers in all areas via Australia Post.

REPLY PAID 85615 may be used to return resources free of charge.

Items limit

DoE staff and teachers of Community Language schools may borrow up to 20 items. University students may borrow up to 5 items for two weeks.

Overdue notices and replacement costs

Borrowers will receive an e-mailed notice requesting the return of overdue items.

Borrowers will be invoiced for all unreturned items.

Cheques should be made payable to the Henry Parkes Equity Resource Centre. Borrowing rights will be suspended during this period until payment is received or the resources returned.

Access to resources

Details about resources can be obtained by:

- visiting the Henry Parkes Equity Resource Centre in person
- using the on-line catalogue at henryparkes.softlinkhosting.com.au
- attending a Henry Parkes Equity Resource Centre display at a professional learning activity
- contacting the Henry Parkes Equity Resource Centre by phone, or email to EquityResourceLibrary@det.nsw.edu.au

All members will be provided with a user name and password to borrow, renew or reserve resources from the on-line catalogue.

Equity Resource Library

Mimika Avenue

WHALAN NSW 2770

Telephone: (02) 8808 1177 Fax: (02) 8808 1171

Email: EquityResourceLibrary@det.nsw.edu.au